

Xirrus Management System – Cloud

DATASHEET

Introducing Xirrus Management System – Cloud

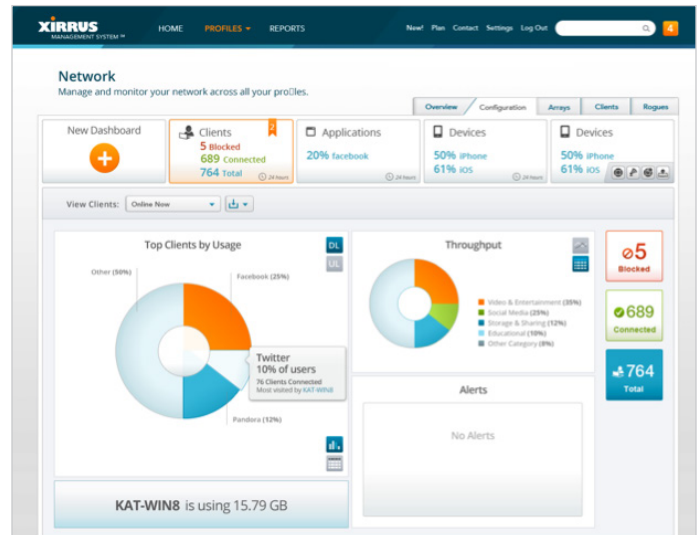
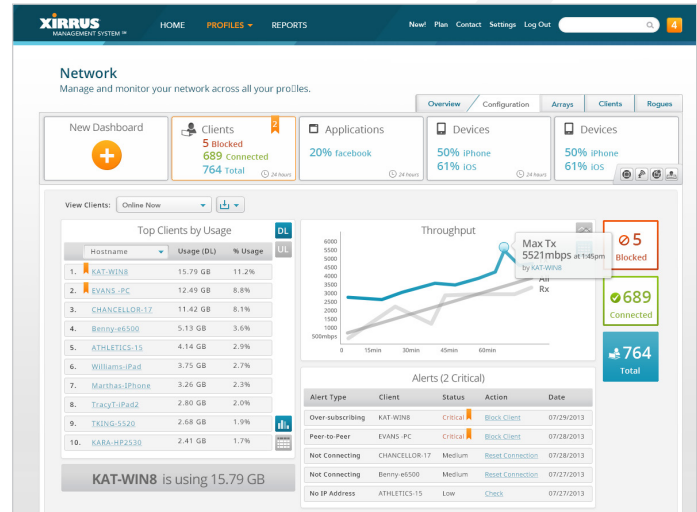
Next generation Xirrus Management System – Cloud (XMS-C) is a cloud-hosted wireless management service designed to be very easy to use. Through an advanced, intuitive user interface and built in, zero-touch activation and configuration capabilities, users can get their wireless network up and running within minutes of receiving Xirrus hardware.

XMS-C features a completely web based user interface that requires no installation or hosting on your part and with XMS-C Xirrus manages all software upgrades for your Xirrus hardware.

XMS-C has been built from the ground up to scale. The architecture of the platform uses many of the core design principles and leverages many of the same technologies that are employed by today's biggest consumer facing web companies.

At A Glance

- Intuitive, easy to use web based interface – Basic and Advanced Views.
- “Zero-touch” activation and configuration of hardware – Plug and Play.
- Manage networks of all sizes – small to very large.
- Monitoring – wireless network performance, traffic, clients, time series analysis.
- Configuration profiles – for bulk configuration through a “single click.”
- Alerting – through emails and alarm notifications.
- No installation or hosting necessary – completely managed by Xirrus.
- No manual end device license and software upgrade management necessary – completely managed by Xirrus.
- Fast global searching through large data sets – advanced indexing.
- Massively scalable – for both users and devices.
- Multi-tenant and Multi-data center deployment – provides high availability, disaster resilience and enhanced load-balancing capabilities.
- JSON API interface – for easy integration with third party applications and services.



Key Benefits

“Plug-and-Play” with early provisioning of devices

With XMS-C your Arrays and APs show up in your cloud interface within a couple hours after you place an order for them (and days before they physically get to you). This allows network designers and administrators to configure network devices from anywhere in the world and have non technical staff plug in the devices and have them up and running within minutes of receiving them – true “plug-and-play.”

“Zero-touch” install with Profiles and automatic hardware optimization

XMS-C makes configuring Arrays/APs as easy as “drag-and-drop” though the concept of “Profiles.” A profile is a set of network configuration settings that reflect a specific network or part of a bigger network. For instance a school district may have one profile for each type of school that reflects the type of users and applications expected to be on them. To get your network up and running all you have to do is create one or more profiles and then allocate Arrays and APs to each of them. You make and save your changes once and XMS-C does all the work of making sure each Array or AP gets the network configuration it is supposed to.

Array Hostname	Serial Number	IP Address	Profile	Location	Online	Status
XR-520-1st-fl	XR503210040A6	10.10.0.21	2187 Funston	1st Floor	Online	Activated
XR-520-Kensington-Library	XR502490000C8	10.0.0.116	38 Marguerite	Main Floor	Online	Activated
XR-520-Kensington-MBB	XR502490000CB	10.0.0.119	38 Marguerite	Main Floor	Online	Activated
XR502490000D5	XR502490000D5		Default Unassigne...		Offline	Activated
XR502490000E8	XR502490000E8		Default Unassigne...		Offline	Activated
XR-520-Grd-fl	XR50321004092	10.10.0.20	2187 Funston	Basement	Online	Activated
XR-520-2nd-fl	XR50321004BE6	10.10.0.22	2187 Funston	2nd Floor	Online	Activated
XR-520-3rd-fl	XR50321004BFA	10.10.0.23	2187 Funston	3rd floor	Online	Activated

Clients On Your Network
Manage the clients connected to your network (across all profiles).

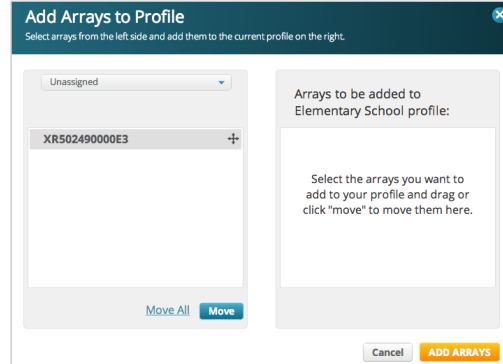
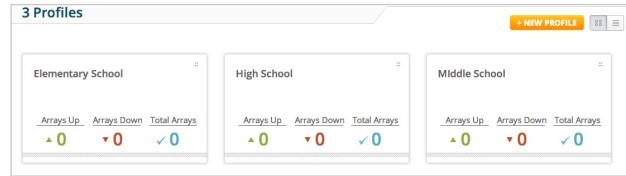
Show: All Clients Online Now on: All SSIDs

Reset Connection Block More

Client Hostname	Username	Device Type	Usage (DL)	Alerts	Last Connected	Status
arsynolds-pc	ryanreynolds	Windows	83.4 mbps	None	July 07, 2013 2:00pm	Allowed
android_9001	juliaroberts	Android	200 mbps	None	July 08, 2013 2:00pm	Allowed
laptop-021	harrisonford	Windows	0 mbps	None	July 06, 2013 1:01pm	Allowed
laptop-032	henrycaville	Windows	1000 mbps	Over-subscribing	July 07, 2013 3:30pm	Blocked
laptop-033	suzannesummers	Windows	500 mbps	Peer-to-peer	July 07, 2013 3:45pm	Blocked
rsbullock-pc	sandrabullock	Windows	45.1 mbps	None	July 07, 2013 3:54pm	Allowed
rscloney98	georgetlooney	iPad	102.3 mbps	None	July 07, 2013 12:05pm	Allowed
speilberg99	stevenspielberg	iPhone	0 mbps	Not Connecting	July 06, 2013 2:00pm	Blocked
arsynolds-pc	danielcraig	Windows	281 mbps	None	July 09, 2013 2:00pm	Allowed
android_9001	rachelmcadams	iPad	210 mbps	None	July 06, 2013 2:00pm	Allowed
laptop-021	rabertdowney	Windows	0 mbps	Not Connecting	July 07, 2013 2:00pm	Allowed
laptop-032	gwenythpaltrow	Mac	5 mbps	None	July 08, 2013 2:00pm	Allowed
laptop-033	tomcruise	Windows	2018 mbps	None	July 05, 2013 2:00pm	Allowed
rsbullock-pc	katieholmes	0 mbps	0 mbps	None	July 05, 2013 2:00pm	Allowed
rscloney98	jakegylfeenthal	iPad	78.9 mbps	None	July 08, 2013 2:00pm	Allowed

Alerts (2 Critical)

Alert Type	Client	Status	Action	Date
Over-subscribing	KAT-WNB	Critical	Block Client	07/29/2013
Peer-to-Peer	EVANS-PC	Critical	Block Client	07/28/2013
Not Connecting	CHANCELOB-17	Medium	Reset Connection	07/28/2013
Not Connecting	Berry-e4503	Medium	Reset Connection	07/27/2013
No IP Address	ATHLETICS-15	Low	Check	07/27/2013



Manage your entire network from a single dashboard

The XMS-C Dashboard is a “widget-based” Summary of your Xirrus Wireless Network. The Dashboard gives you a quick snapshot of your entire network by providing you statistics for various network elements – Arrays/APs, Radios, Clients, Devices, Applications and Rogues. The tiles up top on the dashboard provide summary statistics over the last 24 hours for each case – helping you quickly visualize how many of a given type network element (Arrays/Clients/Devices etc) are up or down at any given moment. By default the dashboard is populated with tiles for Arrays, Radios, Clients, Devices and Applications and with three widgets to represent the data corresponding to each of those network elements. A user can create a dashboard with a completely custom look and feel.

Troubleshoot Arrays, APs and Clients. Visualize and Prioritize Applications.

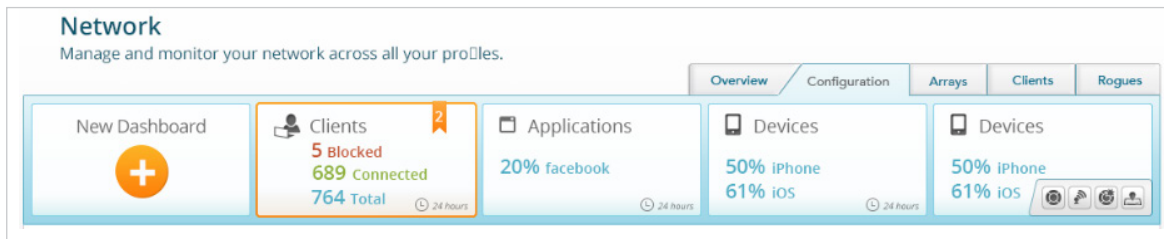
View list of all Arrays and Clients on your network, including details on MAC Addresses, IP Addresses, Status (online/offline). From the Array on client lists, you can drill down to get into further details on a specific Array, AP or Client. XMS-C working in conjunction with Xirrus’ industry leading Application Control helps you visualize over 1,200 applications and prioritize mission critical ones.

Get Alerts and Generate Reports

The XMS-C dashboard includes alerts for any issues with your network, devices and clients as well as the option to set up email notifications.

Manage multiple geographically distributed sites from a single pane of glass

XMS-C is a true multi-tenant cloud solution that lets you manage geographically distributed networks from one unified dashboard. XMS-C is also designed to be massively scalable, in terms of number of users, number of devices and number of sites.



Don't ever worry about software versions, upgrades and maintenance

With XMS-C Xirrus takes care of not just hosting and maintaining your Network Management platform but also firmware upgrades to various Xirrus devices on your network.

The XMS-C dashboard is customizable on a per user basis – you can add or remove widgets, move widgets or data charts around, select data categories displayed and change the overall layout of the dashboard to suit your needs. Dashboards can also be customized to show data on network elements by time – online now, within the last 24 hours, within the last week, within the last month, or since the beginning of time.

Ordering Information

PART NUMBER	DESCRIPTION
Software and Support	
XMS-9500-CL-1	XMS (Xirrus Management System) Cloud 1 year license for managing 1 radio. Order quantity based on total number of radios to be managed. Includes 1 year Premium Support for the XMS Cloud instance and ArrayOS on the managed Array or AP.
XMS-9500-CL-3	XMS (Xirrus Management System) Cloud 3 year license for managing 1 radio. Order quantity based on total number of radios to be managed. Includes 3 year Premium Support for the XMS Cloud instance and ArrayOS on the managed Array or AP.
XMS-9500-CL-5	XMS (Xirrus Management System) Cloud 5 year license for managing 1 radio. Order quantity based on total number of radios to be managed. Includes 5 year Premium Support for the XMS Cloud instance and ArrayOS on the managed Array or AP.

Support & Maintenance

Xirrus is committed to the success of our customers and provides warranties and support options to best fit your needs. For further information on the Xirrus hardware warranties, software support and premium support offerings visit:

<http://www.xirrus.com/support/>

About Xirrus

To organizations who depend on wireless access to transform their business, Xirrus is the wireless network solution provider that provides the world's most powerful, scalable, and trusted solutions. Through product invention and system design, commitment to customer success, and the industry's best price performance, Xirrus gives you confidence that your wireless network performs under even the most demanding circumstances. Xirrus is a privately held company headquartered in Thousand Oaks, CA.



1.800.947.7871 Toll Free in the US
 +1.805.262.1600 Sales
 +1.805.262.1601 Fax
 2101 Corporate Center Drive
 Thousand Oaks, CA 91320, USA

To learn more visit:
xirrus.com or
 email info@xirrus.com